

EVERY MEAL

FIGHTING CHILD HUNGER



NOTE FROM OUR PRESIDENT

This year was one of steady and meaningful progress for Every Meal. The year consisted of momentum across our programs, our people, and our operations. We focused on building the capacity needed to ensure the children and families we serve can continue to count on us, today and into the future.

We also had a significant direct impact through our mission to fight child hunger through community and school partnerships. Through our Weekend Meal Program, we served thousands of children with over 1.8 million meals!

At the center of this work are those making it happen - our staff, volunteers, partners, vendors, and you. Throughout the year, we welcomed new staff, strengthened leadership, expanded our volunteer opportunities, and continued to invest in a culture rooted in our values of relationships, commitment, thoughtful communication, and positive impact.

We also made important investments in our infrastructure. We improved our facilities, technology, financial strategy, governance, and partnerships. In May, we began the expansion into the rest of our building - an important step that increases our capacity and supports the future of our work. We literally tore down walls to feed more kids.

While the numbers in this report tell part of the story, their true meaning lies in the children and families they represent. Each meal is a reminder of what's possible when a community comes together - when you join in our mission with purpose and care. Together, we are working towards a future where every child will have every meal.



Rob Williams

Rob Williams, President

OUR MISSION
FIGHT CHILD HUNGER
THROUGH COMMUNITY &
SCHOOL PARTNERSHIPS

everymeal.org



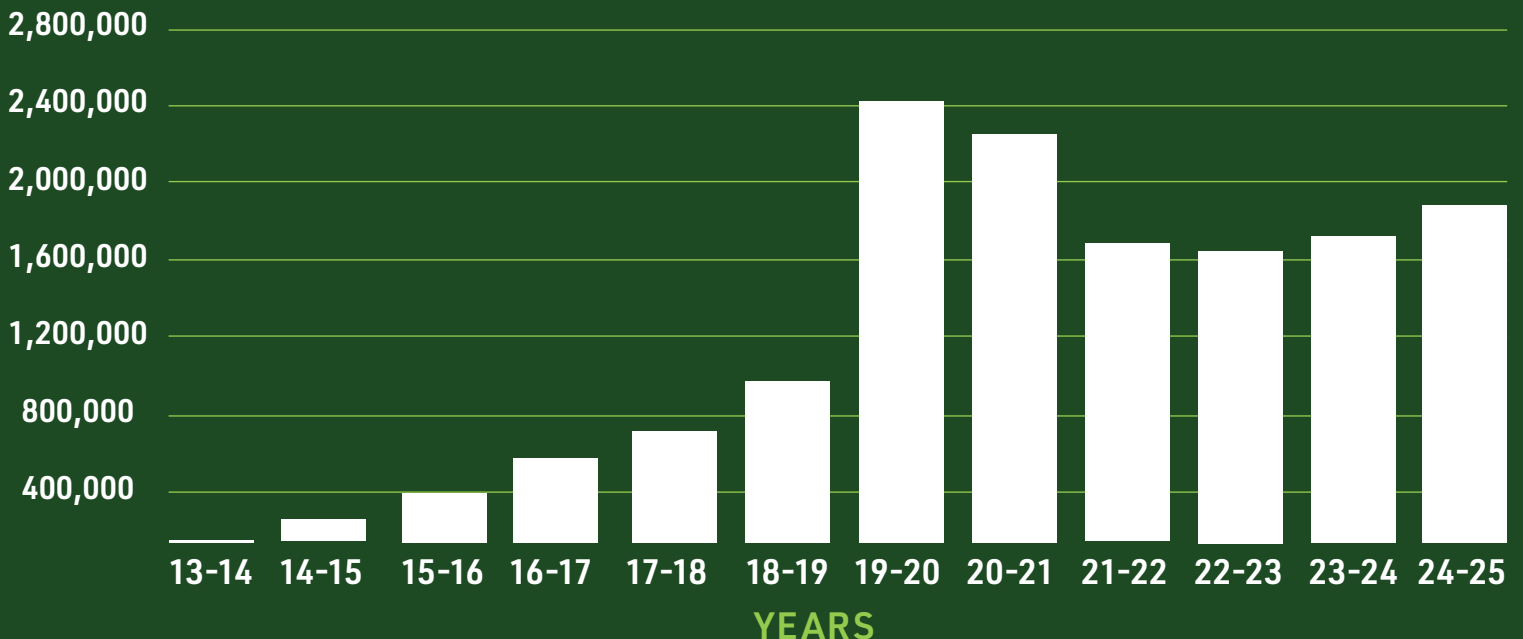
HOW WE MEASURE “SUCCESS”

IMPACT OF OUR MULTIPLE FOOD GAP PROGRAMS IN 2024-2025 SCHOOL YEAR

1,860,845 meals | 393 food distribution locations

OUR IMPACT

Number of meals served to children in our community by school year



14,868,688 MILLION MEALS PROVIDED

POPULATIONS SERVED

Families may choose from five food bag options tailored to various cultural dietary preferences or situational needs.



Blue Bag

Tailored for East African dietary preferences.



Green Bag

Tailored to offer the widest variety of food items



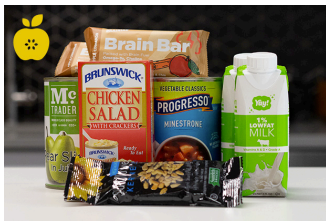
Orange Bag

Tailored for Latino dietary preferences



Purple Bag

Tailored for Southeast Asian dietary preferences



Yellow Bag

Tailored with ready-to-eat items that require little or no preparation



Scan QR code to see our 5 food bag options or go to www.everymeal.org/foodbags

GEOGRAPHIC LOCATIONS

Every Meal fills the gaps in food access that children face, especially on weekends when they're not able to eat school meals. We served children and families across Minnesota through our multiple food gap programs in the following cities:

Adrian, Albertville, Andover, Anoka, Apple Valley, Blaine, Bloomington, Brooklyn Center, Brooklyn Park, Burnsville, Cambridge, Cannon Falls, Carver, Champlin, Chanhassen, Chaska, Chisago City, Circle Pines, Columbia Heights, Coon Rapids, Cottage Grove, Crystal, Dayton, Delano Dodge Center, Eagan, Eden Prairie, Edina, Elk River, Excelsior, Falcon Heights, Farmington, Forest Lake, Fridley, Golden Valley, Goodhue, Grand Rapids, Ham Lake, Hastings, Hibbing, Hugo, Inver Grove Heights, Isanti, Jordan, Lake City, Lake Elmo, Lakeville, Little Canada, Long Lake, Maple Grove, Maplewood, Mazeppa, Milaca, Minneapolis, Minnetrista, Monticello, Mora, Mound, Mounds View, New Brighton, New Hope, North Branch, North St. Paul, Oakdale, Olivia, Osseo, Otsego, Plymouth, Princeton, Prior Lake, Ramsey, Red Wing, Richfield, River Falls, Robbinsdale, Rockford, Rogers, Rosemount, Roseville, Savage, Shakopee, Shoreview, Silver Lake, South St. Paul, St Paul Park, St. Cloud, St. Louis Park, St. Michael, St. Paul, Stillwater, Vadnais Heights, Victoria, Wabasha, Watertown, Wayzata, West St. Paul, Woodbury, Worthington, Zimmerman, Zumbrota

101 CITIES

2024-2025 FINANCIAL STATEMENTS

(JULY 2024-JUNE 2025)

Revenue	2024-2025*	2023-2024*	2022-2023*
Community Sponsors	\$ 1,660,319	\$ 1,446,166	\$1,420,444
Individuals	\$ 4,628,799	\$ 2,216,292	\$3,559,199
Grants	\$ 3,829,551	\$ 5,489,878	\$3,853,785
In Kind Services, Goods & Food	\$ 672,033	\$ 326,627	\$891,339
Other	\$ 849,986	\$ 94,485	\$769,864
Total Revenue	\$ 11,640,688	\$ 9,573,448	\$10,494,631
Program Expenses			
Program Services	\$ 4,836,684	\$ 5,059,076	\$5,849,138
Management & General	\$ 619,973	\$ 654,865	\$741,780
Fundraising & Volunteer Recruitment	\$ 1,150,547	\$ 1,174,374	\$1,077,245
Total Functional Expenses	\$ 6,607,204	\$ 6,888,315	\$7,668,163
Net Revenue/Deficit	\$ 5,033,484	\$ 2,685,133	\$2,826,468
Assets			
Cash	\$ 3,298,083	\$ 1,125,902	\$2,945,706
Inventory	\$ 973,200	\$ 898,297	\$1,080,205
Property & Equipment	\$ 8,537,401	\$ 8,184,350	\$326,741
Other Assets	\$ 1,576,410	\$ 1,229,847	\$2,381,431
Total Assets	\$ 14,385,094	\$ 11,438,396	\$6,734,083
Liabilities & Net Assets			
Accounts Payable & Accrued Expenses	\$ 323,199	\$ 141,759	\$214,911
Deferred Revenue	\$ -	\$ 12,191	\$ 179
Deferred Rent	\$ -	\$ -	\$ -
Capital Lease	\$ 67,028	\$ 263,599	\$517,678
Line of Credit	\$ -	\$ 250,000	\$ -
Notes Payable	\$ 274,935	\$2,084,399	
Total Liabilities	\$ 665,162	\$ 2,751,948	\$732,768
Total Net Assets	\$ 13,719,932	\$ 8,686,448	\$6,001,315
Total Liabilities & Net Assets	\$ 14,385,094	\$ 11,438,396	\$6,734,083

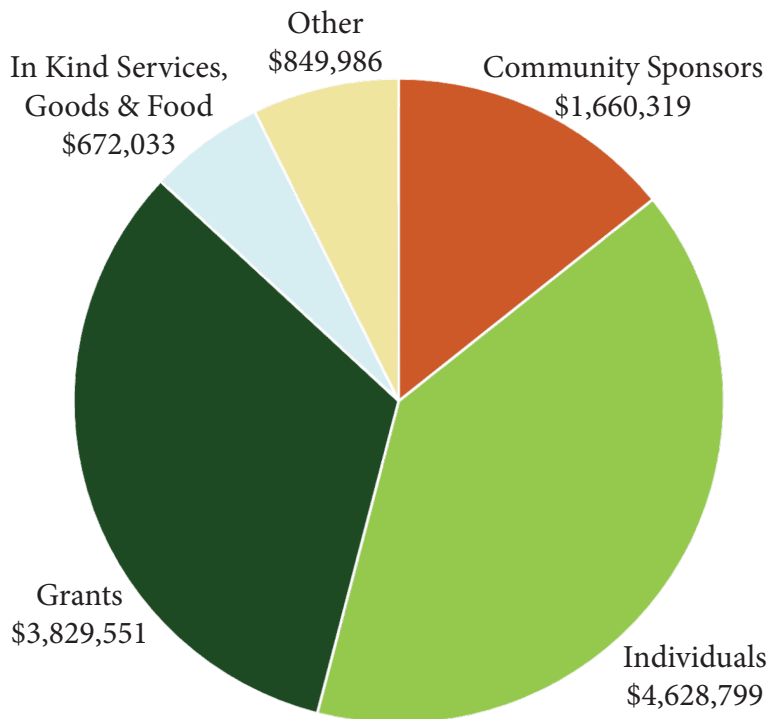
* Fiscal years 2022-2023, 2023-2024, and 2024-2025 had a significant net revenue due to funding received and pledged for a capital building purchase.



2024-2025 FINANCIAL OVERVIEW

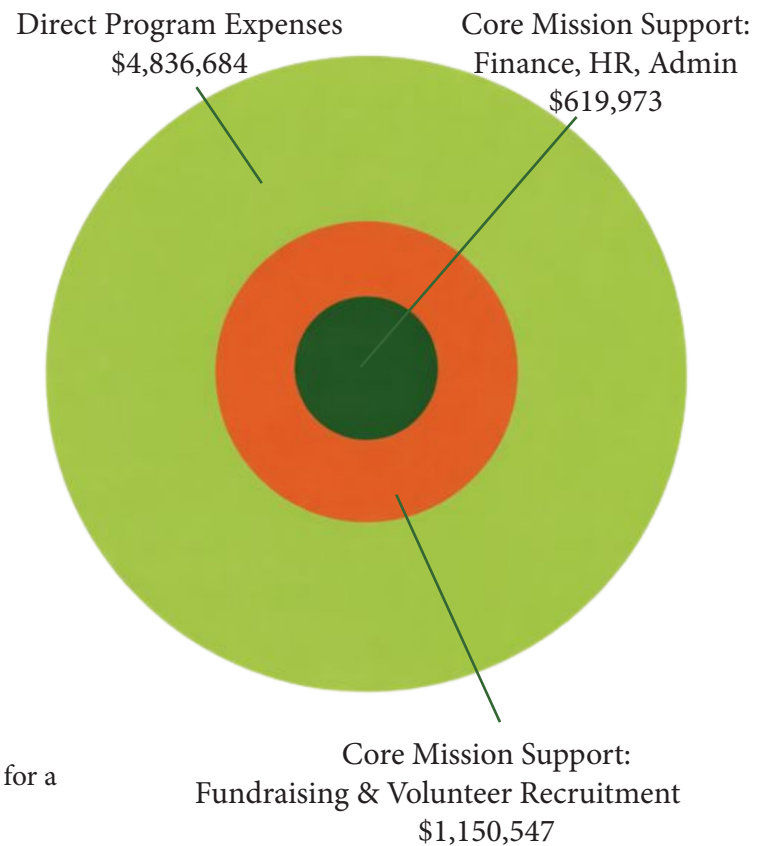
Revenue

Total: \$11,640,688*



Expenses

Total: \$6,607,204



*Significant net revenue is due to funding received and pledged for a capital building purchase.

BOARD OF DIRECTORS

- Jenna Soule (Chair)** - Owner and Head of Marketing, Tonka Bay Marina
- Chris Duffy (Vice Chair)** - Vice President of Public Relations, Goff Public
- Helene Clark (Treasurer)** - Retired, Chief Marketing & Strategy Officer, Welch's
- Rachel Riensche (Secretary)** - Senior Counsel, American Public Media Group
- Stephanie Bach** - Director, BMO Commercial Bank
- Ryan Beach** - Vice President, Health, Target Corporation
- Karen Contag** - Community Volunteer
- Latanya Daniels** - Assistant Superintendent, Richfield Public Schools
- Bruce Ensrud** - Wealth Advisor & Founding Partner, Parable Wealth Partners
- DeeDee Gorman** - Senior Community Relations Specialist, ECMC Group
- Kelly Gulbrandson** - Director of Community Relations, Apple Autos
- Christina Haddad Gonzalez** - Director of Student Support Services, Richfield Public Schools
- Karmen Hoxie** - CPA, Self Employed
- Brandon Jones, MA** - Executive Director, Minnesota Association For Children's Mental Health
- Susan Munson-Regala** - Vice President and CFO, Employee Benefits, Securian Financial
- Steve Rieke** - Global Smart Manufacturing Leader, Cargill
- Jo Saxton** - Speaker, Author, Executive Director of The25 at Bethel University
- Scott Tonneson** - Portfolio Manager, Nuveen
- Jeff Wessels** - President/Chief Operating Officer, Crown Bank
- Rob Williams (Staff)** - President and Founder, Every Meal

SUPPORTERS AND VOLUNTEERS

We couldn't do it without our partners in the community - thank you!

- * 3,094 VOLUNTEERS
- * 19,729 VOLUNTEER HOURS
- * 3,697 DONORS



CONTACT US

2723 Patton Road, Roseville, MN 55113

everymeal.org

612-568-4003

facebook.com/EveryMealorg

instagram.com/everymealorg

linkedin.com/company/Every-Meal

HOW YOU CAN HELP FIGHT CHILD HUNGER



SPONSOR A SCHOOL



VOLUNTEER



SPREAD AWARENESS



DONATE



everymeal.org